

September 2014

Energy Development

More than 350,000 oil and gas wells have been drilled in Pennsylvania since the first commercial oil well was developed in 1859 by Colonel Drake in Titusville.

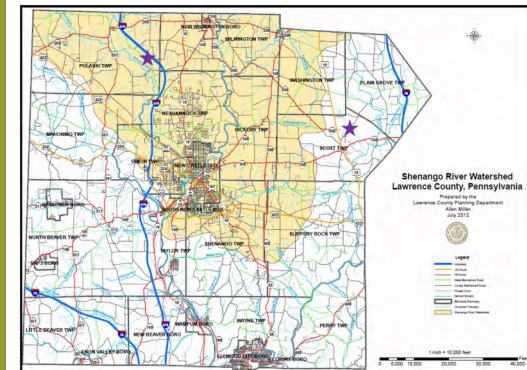
Sun	Mon	Tue	Wed	Thu	Fri	Sat
	1	2	3	4	5	6
7	8	9	10	11	12	13
14	15	16	17	18	19	20
21	22	23	24	25	26	27
28	29	30				

QUESTION OF THE MONTH:

REFRESHER! What is a best management practice?

Shenango River Watershed Development

So where are the areas affected by the gas activities within the Shenango River Watershed? You can learn about these sites, and others, by visiting the Department of Environmental Protection's website: www.depweb.state.pa.us



Currently, there are two well sites within or near the Shenango River Watershed, including one located in Pulaski Township and another located in Scott Township.

Local land use can have an affect on the quality of your well water.



Non-point source pollution activities performed within your drinking water supply area can pollute the local groundwater source. It is important to monitor and limit these kinds of activities near your private water system.

For example, water test results may show increased levels of nitrate if your well is near a farm or backyard garden.



October 2014

Private Water Systems

Over 3 million people in Pennsylvania get their water from a **private water system** such as a well, spring, or cistern.

Sun	Mon	Tue	Wed	Thu	Fri	Sat
			1	2	3	4
5	6	7	8	9	10	11
12	13	14	15	16	17	18
19	20	21	22	23	24	25
26	27	28	29	30	31	

QUESTION OF THE MONTH: True or False. The same non-point source pollution that affects the Shenango River Water Supply can also affect private water supply systems within the Shenango River Watershed .

NPS affects Private Water Supplies too!

Unlike public drinking water systems, home-owners with private wells do not have help with the management of their water supply. They must take the time to check that their water supply is always healthy to drink. By understanding the local land use, homeowners can pinpoint which additional water tests may be beneficial.



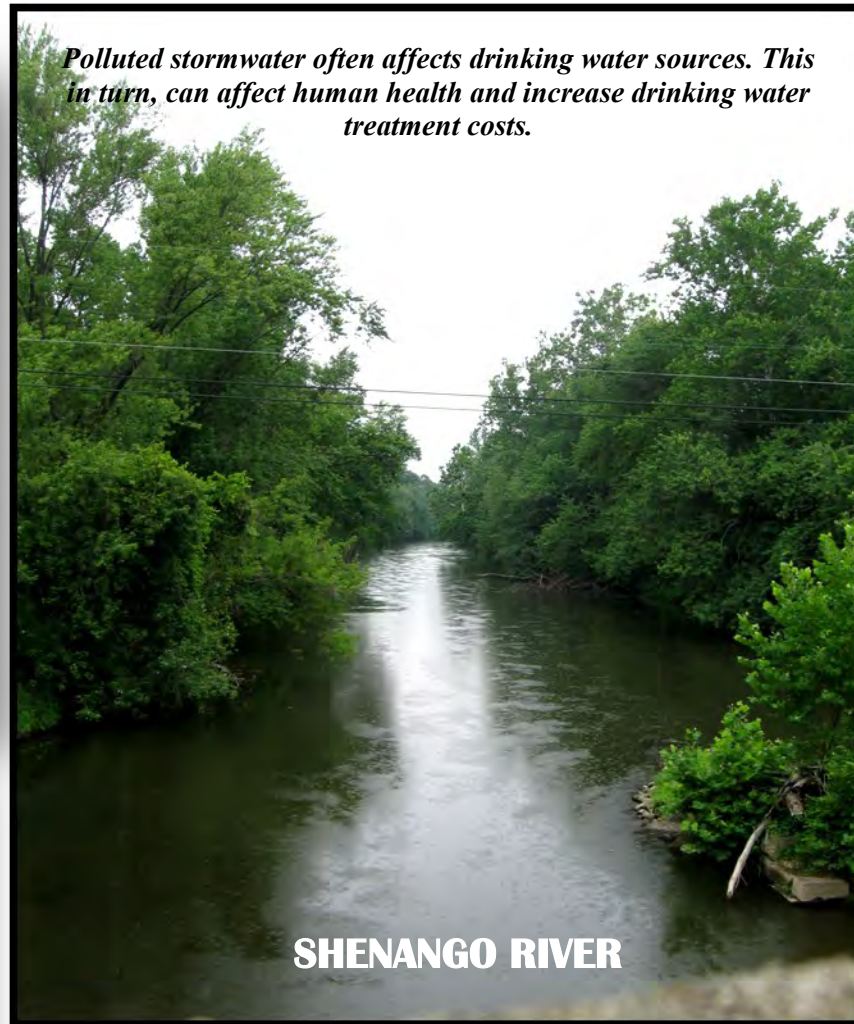
For additional information on private water systems visit:

*Pennsylvania Association
of Ground Water*
www.pgwa.org

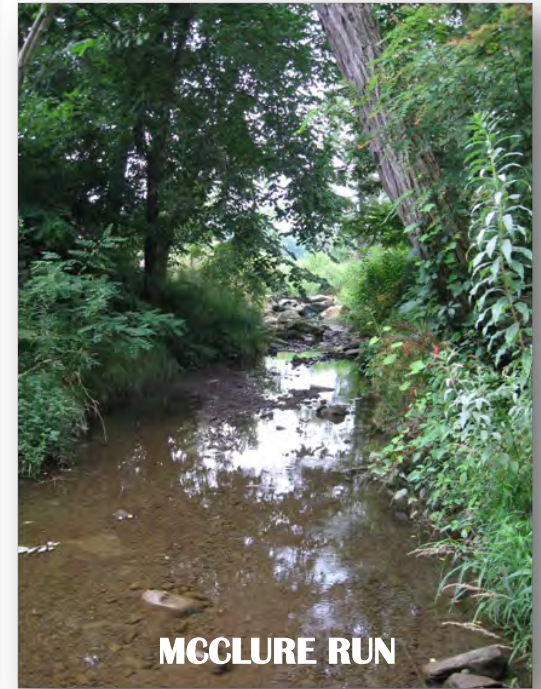
*Penn State Extension Master Well
Owner Network*
www.extension.psu.edu/water/mwon



NESHANNOCK CREEK



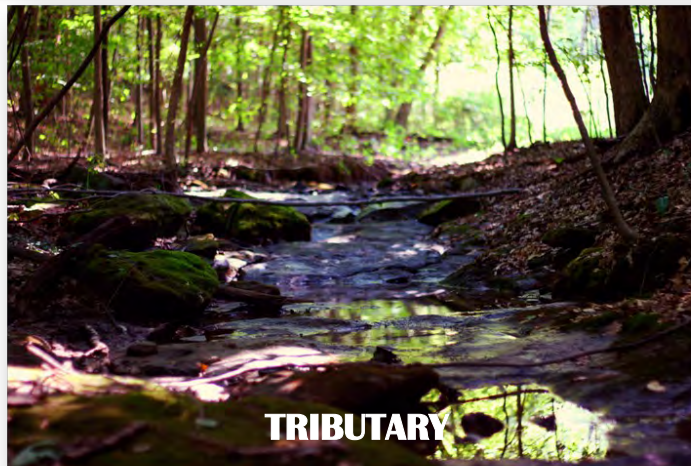
SHENANGO RIVER



MCCLURE RUN



TRIBUTARY



TRIBUTARY



POTTER RUN

Polluted stormwater often affects drinking water sources. This in turn, can affect human health and increase drinking water treatment costs.

November 2014

Public Drinking Water System

A **public drinking water system** is a water system that supplies water to over 25 people at least 60 days per year.

Sun	Mon	Tue	Wed	Thu	Fri	Sat
						1
2	3	4	5	6	7	8
9	10	11	12	13	14	15
16	17	18	19	20	21	22
23	24	25	26	27	28	29
30						

QUESTION OF THE MONTH: True or False. The expense of treating polluted water or finding a new source of drinking water can be avoided through source water protection.

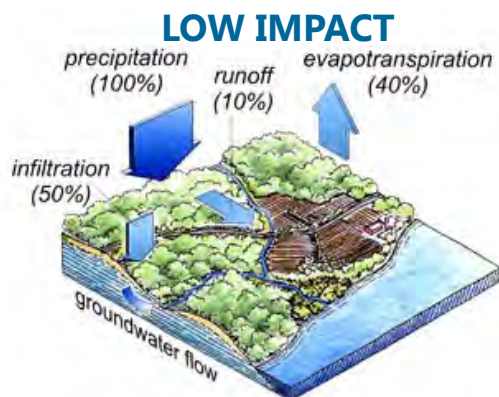


Penn American Water

Pennsylvania American Water-New Castle (PAW-NC) provides drinking water to a population of 46,445 residents within 10 municipalities in Lawrence County, PA. The residents get their drinking water from the Shenango River, which flows south from Ohio and into Pennsylvania for approximately 92 miles before meeting the Mahoning River.



New Wilmington Low Impact Development



In New Wilmington, on Westminster Campus, you can view two examples of LID best management practices. The college replaced part of a parking lot with porous pavement. As you can see in the close up view above, the porous pavement provides space for the rainwater or snow melt to soak into the ground. This decreases the amount of runoff flowing into McClure Run. As the runoff decreases, so does the amount of non-point source pollution potentially being carried with the runoff into McClure Run. The streamside buffer established along McClure Run, shown in the picture in the upper left corner, filters the runoff from the surrounding parking lots, helping to decrease the amount of pollution entering McClure Run.

