

# BRADFORD COUNTY FARM VISITS PROJECT

Mike Lovegreen – District Manager

# Locally Known as “The Paul Revere Ride”



# OVERLYING PRINCIPLES

- \* Educationally Oriented
- \* Offer technical and informational assistance
- \* Provide information & assistance for:
  - \* Farmer “do it yourself”
  - \* Group planning with District assistance
  - \* One on One planning assistance
- \* District “due diligence” in reaching out to all farmers
- \* Focus on basic planning needs – Manure & E&S

# Methodology

- \* Utilize diverse outreach personnel
  - \* Existing Ag Staff
  - \* Retired Farmers contracted
  - \* Interns
  - \* FFA Students
- \* Prepared information Packets
  - \* Overviews
  - \* Letter from District offering assistance
  - \* Manure Management Manual
  - \* Barn Sheets & Brochures
  - \* Ag E&S guidance

# Methodology

- \* Training of outreach team
  - \* Orientation to regulations and programs
  - \* Emphasis on friendly “educational” approach
  - \* Ag staff ride along for first few days
- \* Farms defined as any tillage or animals
- \* Map / GPS all stops
- \* Fill out forms in car not in front of farmer
- \* Review work regularly
- \* Geography intern for data input
- \* County Regional Trainings for Farmers

# Sources of Funds

- \* CB Special Project
- \* Nutrient Management Funds
- \* Keep PA Beautiful

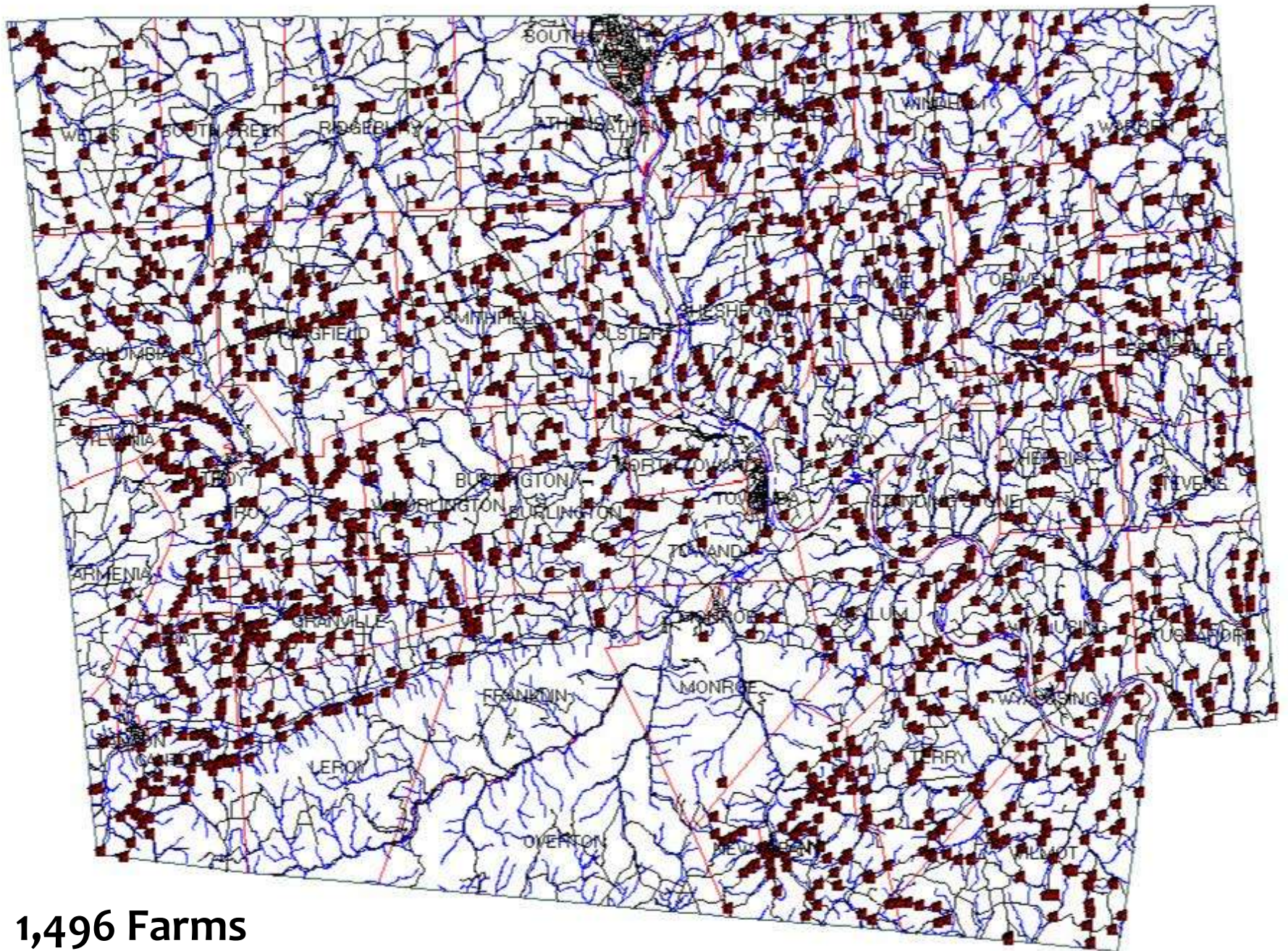
# Lesson Learned

- \* Some resentment by farmers on being informed
- \* Professional Ag staff could have been better ambassadors but could never have done it
- \* Group regional planning sessions were poorly attended
- \* Need to keep emphasis on value of resource plans and not so much on “regulatory/compliance” requirements
- \* Retired farmers may not make the best contractors

# FOLLOWUPS

- \* Continued outreach via events, trainings, group planning
- \* Work with Farm Bureau and Grange
- \* Sharing of experience





1,496 Farms