

# Funding Opportunities for PA Conservation

## National Fish & Wildlife Foundation and the Chesapeake Bay



***Accelerating local implementation of the most innovative, sustainable and cost-effective strategies to restore and protect water quality and vital habitats within the Chesapeake Bay watershed.***



NFWF



Chesapeake Bay Stewardship Fund

# NFWF's Chesapeake Bay Program Team

**Jake Reilly**  
Director



**Elizabeth Nellums**  
Program Manager



**Kristen Saacke Blunk**  
Headwaters LLC  
Field Liaison



**Mark Melino**  
Program Coordinator



**NFWF**



Chesapeake Bay Stewardship Fund

# NFWF's Chesapeake Bay Program – Grants

## Chesapeake Bay Stewardship Fund (CBSF)

- Small Watersheds Grant
- Innovative Nutrient & Sediment Reduction Grant
- Technical Capacity Program
  - Agricultural Conservation
  - Restoration and Community Stewardship
  - Stormwater Management
- ***Special Opportunity*** – Regional Conservation Partnership Program
  - Comprehensive agricultural conservation in dairy and livestock landscapes in specific geographies



NFWF



Chesapeake Bay Stewardship Fund

# Chesapeake Bay Business Plan Strategies

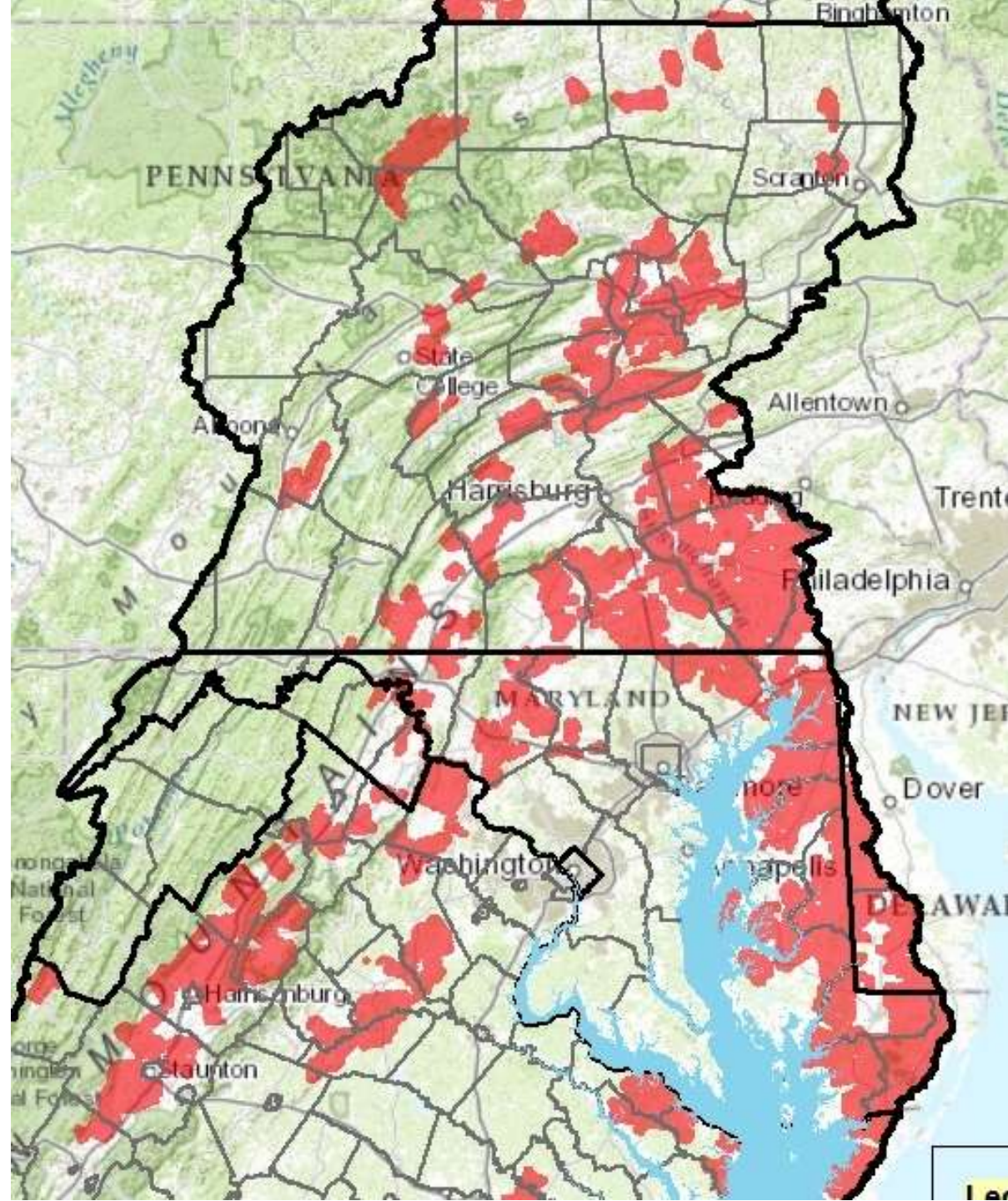
1. Focus on High Priority Targeted Watersheds
2. Support Innovation on Cross Cutting Issues
1. Advance Local Government Green Infrastructure Solutions



# NFWF Priority Areas By County

Prioritize geographies for conservation using spatial datasets:

- A. Stream Health (US EPA)
- B. Vulnerability to Development (USGS)
- C. Priority Areas for Nitrogen and Phosphorus (US EPA Chesapeake Bay Program Office)
- D. Eastern Brook Trout data (Eastern Brook Trout Joint Venture)
- A + B + C + D =  
**Potential Areas for Watershed Restoration**



# NFWF (Ag-related) CBSF PA Projects

- 2014
  - Farm Bill Biologist Partnership – Pheasants Forever
  - Whole Farm Conservation (Franklin & Lancaster) – Stroud Water Research Center
  - Juniata River Basin Ag Conservation Program – Chesapeake Bay Foundation
  - Beyond Compliance – Continuous improvement in the Pequea – Lancaster Farmland Trust
- 2013
  - Reducing Ag Pollution in North-central PA – CBF
  - Outreach & Technical Assistance: Juniata River Farmers – Mifflin Co CD



NFWF



Chesapeake Bay Stewardship Fund

## Cont'd NFWF (Ag-related) CBSF PA Projects

- 2012
  - Comprehensive Ag Stewardship in Lancaster Co – Stroud
  - Greening the Lower Susquehanna – Penn State
  - Model for Cost-Shared Riparian Buffer Maintenance – Capitol RC&D
  - Restoring Riparian Forests for Water Quality and Brook Trout – The Nature Conservancy
  - Technical Assistance for New and RE-Enrolling Cost Share Buffers – CBF
- 2011
  - Plain Sect Outreach and Manure Management Workshops – Lancaster Co CD
  - Centre County Agricultural Conservation Program – Centre Co CD



NFWF



Chesapeake Bay Stewardship Fund

# Grant Evaluation Criteria

- Environmental Results (25 points)
  - Protects/restores the water quality and living resources of the Chesapeake Bay and its tributaries
  - Supports State in meeting WIP goals for the Bay
- Priority Strategies (15 points)
  - Addresses one or more of the Priority Funding Strategies.
- Partnership (15 points)
  - Supported by a strong local partnership that will implement
  - AND sustain it after the life of the grant.



NFWF



Chesapeake Bay Stewardship Fund



# Cont'd Grant Evaluation Criteria

- Transferability (15 points)
  - potential and plan to transfer lessons learned to other communities within the Chesapeake Bay region and/or
  - to be integrated into government programs and policies
- Work Plan (15 points)
  - technically sound and feasible
  - sets forth a clear, logical and achievable work plan.
- Budget (15 points)
  - cost-effective, reasonable, and
  - leverages other partner contributions.



NFWF

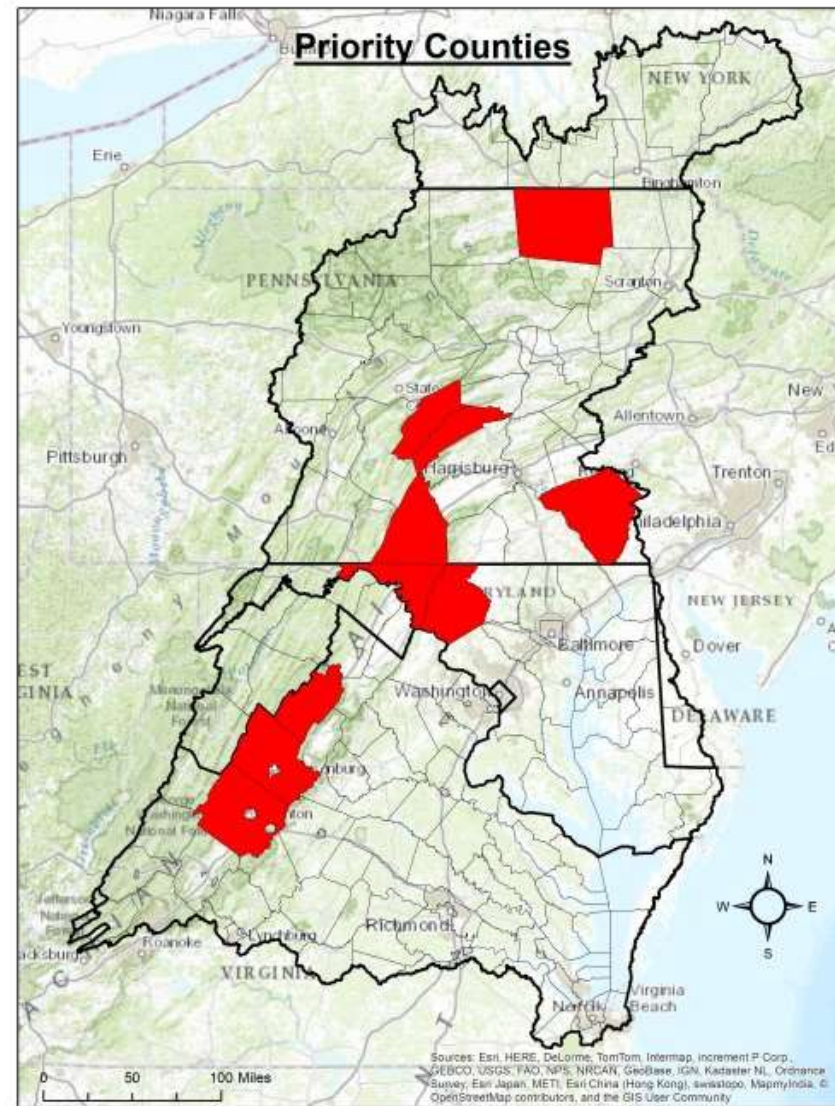


---

Chesapeake Bay Stewardship Fund

# Special Opportunity - RCPP

- Targeted watersheds within dairy/livestock landscapes
- Robust local partnerships to deliver Farm Bill programs
- Considerations:
  - Meet state and other regulatory requirements
  - Establish forested riparian buffers/exclusion
  - Access to additional FA for whole farm practices



NFWF



Chesapeake Bay Stewardship Fund

# Timeline for 2015 Grants

- Proposals Due ..... **First week of May**

*(Committee Reviews, Congressional/Board Notification through August)*

- Grants Announced ..... **Early August**

- Grant Agreements Issued ..... **August – October**



NFWF



Chesapeake Bay Stewardship Fund



**NFWF Chesapeake Staff:**

Jake Reilly, Program Director, [Jake.Reilly@nfwf.org](mailto:Jake.Reilly@nfwf.org)

Elizabeth Nellums, Program Manager,  
[elizabeth.nellums@nfwf.org](mailto:elizabeth.nellums@nfwf.org)

Mark Melino, Program Coordinator,  
[mark.melino@nfwf.org](mailto:mark.melino@nfwf.org)

(202) 857-0166

[www.nfwf.org/chesapeake](http://www.nfwf.org/chesapeake)

**Chesapeake Field Support:**

Kristen Saacke Blunk, Headwaters LLC

(814) 360-9766, [Kristen@headwaters-llc.org](mailto:Kristen@headwaters-llc.org)

