

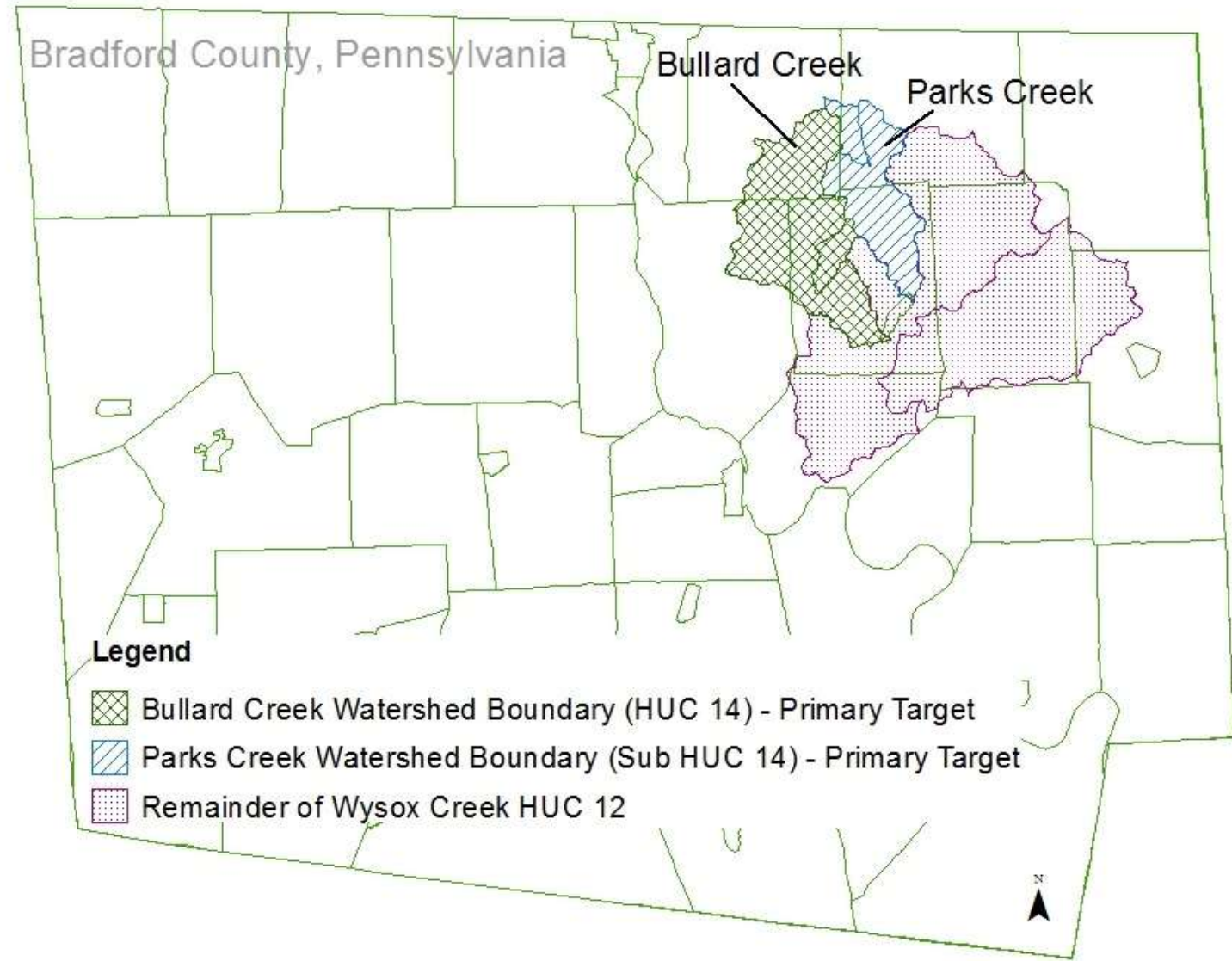
Bradford County Conservation District

Project Profiles of Agriculture Best Management Practices

Nathan Dewing; Ag Team Leader

The Wide Angle View

Watershed Priorities



3 Farms

Included in a 2014 Chesapeake Bay Special Project Grant

- Bowen Farm - 1,110 feet of Access Road
- Manchester Farm - Roof runoff diverting clean water from manure
- Peters Farm - Roof runoff diverting clean water from manure



Bowen Farm

CB Special Project Grant

- 1,110 feet of Access Rd

Chesapeake Bay Model Reports:
No Credits for Access Road



Grant funds = \$19,360

Landowner costs = \$4,840

Total Cost = \$24,200

Manchester Farm

CB Special Project Grant

- 176 feet of roof gutter
- 419 feet of underground outlet

Grant funds = \$3,448

Landowner costs = \$862

Total Cost = \$4,310

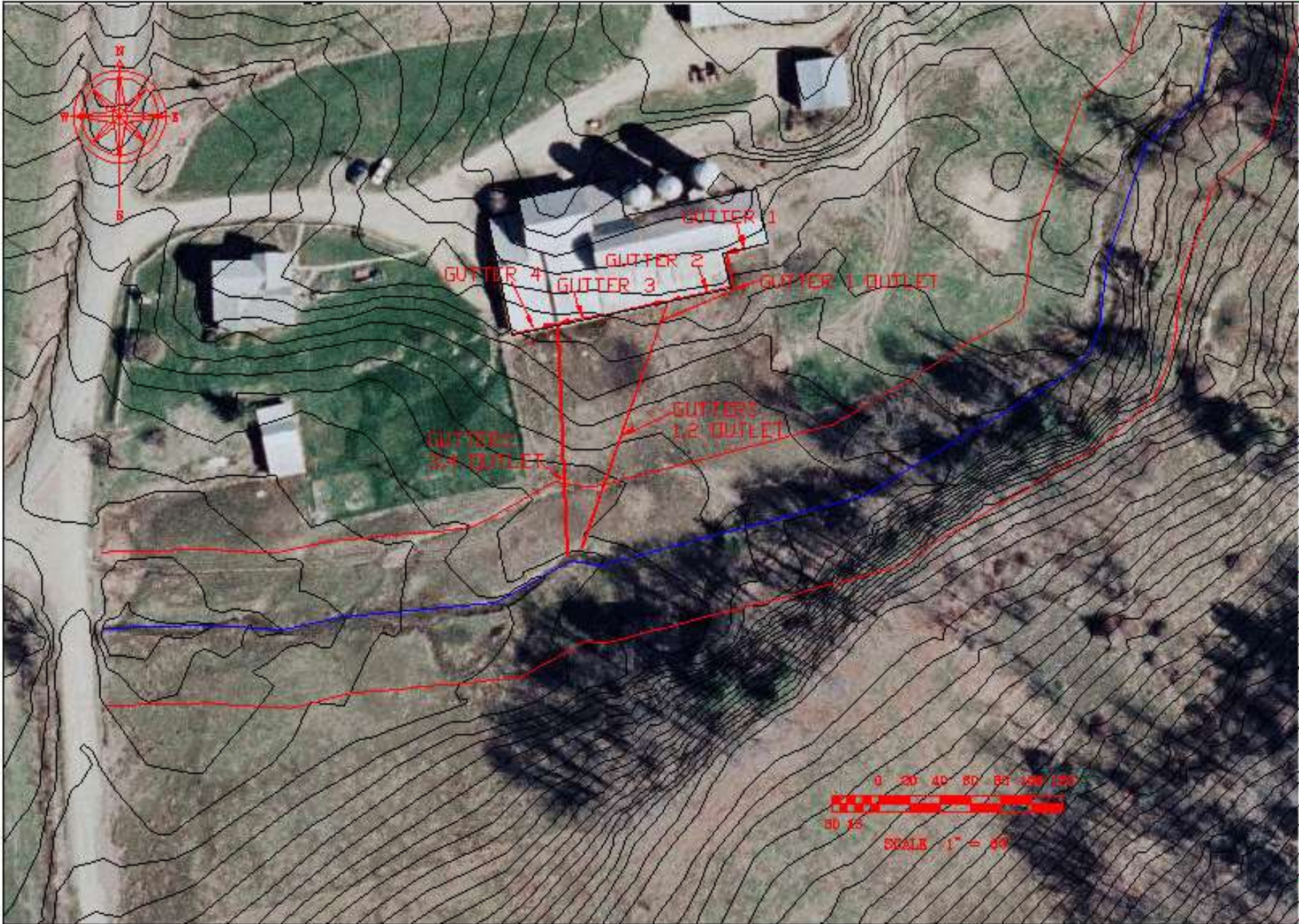
Chesapeake Bay Model Reports:

N Reduction = **38 lbs/yr**

P Reduction = **6.2 lbs/yr**

Sediment Reduction = **3 lbs/yr**





USDA NRCS
 Natural Resources Conservation Service

ROOF GUTTERS
 OUTLET POINT, CONDUIT
 FLAY VEIN

Peters Farm

CB Special Project Grant

- 186 feet of roof gutter
- 300 feet of underground outlet

Grant funds = \$2,496

Landowner costs = \$624

Total Cost = \$3,120

Chesapeake Bay Model Reports:

N Reduction = 76 lbs/yr

P Reduction = 12.4 lbs/yr

Sediment Reduction = 6 lbs/yr





What did we buy?

CB Special Project Grant Funds = \$25,304
Landowner costs = \$6,326
Total Cost = \$31,630

Chesapeake Bay Model Reports:

N Reduction = 114 lbs/yr

P Reduction = 18.6 lbs/yr

Sediment Reduction = 9 lbs/yr



Milkhouse Waste



A Whole Farm Project...

2015 construction

Heavy Use Area Protection	5880 sq ft
Waste Storage Facility	2,480 sq ft; 9,920 cu ft
Roof (over HUAP and MSF)	8,240 sq ft
Roof Runoff	2 systems - 448 linear feet total
Underground Outlet	3 outlets - 798 linear feet total
Access Road	150 linear feet
Streambank and Shoreline Protection	82 linear feet
Prescribed Grazing	17.7 acres
Livestock Pipeline	782 linear feet
Watering Facility	2 troughs
Fencing	2,191ft
Riparian Herbaceous Cover	2.9 acres

Before



After



What did we buy?

Grant funds = \$143,000

Landowner costs = \$66,000

Total Cost = \$209,000

Chesapeake Bay Model Reports:

N Reduction = **683 lbs/yr**

P Reduction = **93 lbs/yr**

Sediment Reduction = **6,035 lbs/yr**

